

Bermuda RNAV Procedures

Eff.: April 27, 2017

Presented to: NYTD/NYAPIO DIM

By: NY ARTCC

Date: March 23, 2017



Federal Aviation
Administration



Background

- **BERMUDA TO HOST 35TH AMERICA'S CUP COMPETITION:**
 - QUALIFICATION RACES BEGIN MAY, 26TH
 - CHAMPIONSHIP MATCH RACE BEGINS JUNE 17TH
- **ADDITIONAL AIR TRAFFIC VOLUMES ANTICIPATED**

Air Traffic Service

L. F. Wade International Airport

- **ATC EN ROUTE AND APPROACH SERVICES PROVIDED BY NEW YORK ARTCC**
- **SINGLE RADAR SITE:**
 - NO BACK-UP RADAR AVAILABLE
 - NO ADSB SERVICE
- **RADAR SYSTEM OUTAGE REQUIRES NON-RADAR AIR TRAFFIC SERVICE**

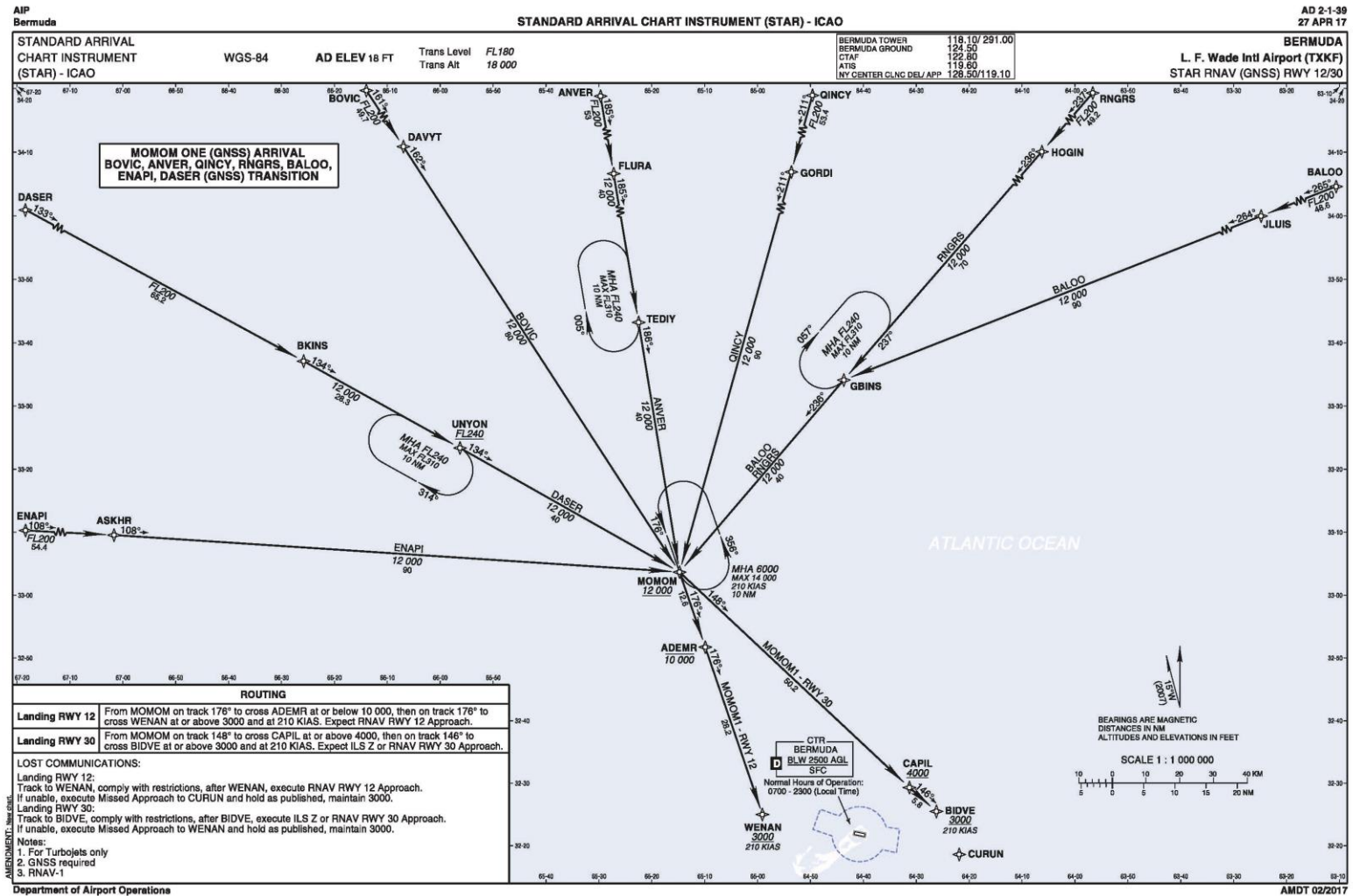
RNAV Departure/Arrival Procedures

- **MOMOM ONE RNAV (GNSS) STAR**
- **POPOP ONE RNAV (GNSS) STAR**
- **BORNN ONE (GNSS) DP (RUNWAY 12)**
- **SOMRR ONE (GNSS) DP (RUNWAY 30)**
 - ***DP'S FOR NON-RADAR USE ONLY***

MOMOM ONE RNAV (GNSS) STAR

- **EN ROUTE TRANSITIONS:**
 - ENAPI
 - DASER
 - BOVIC
 - ANVER
 - QINCY
 - RNGRS
 - BALOO
- **VERTICAL NAVIGATION**
- **RWY 12 TRANSITION**
- **RWY 30 TRANSITION**

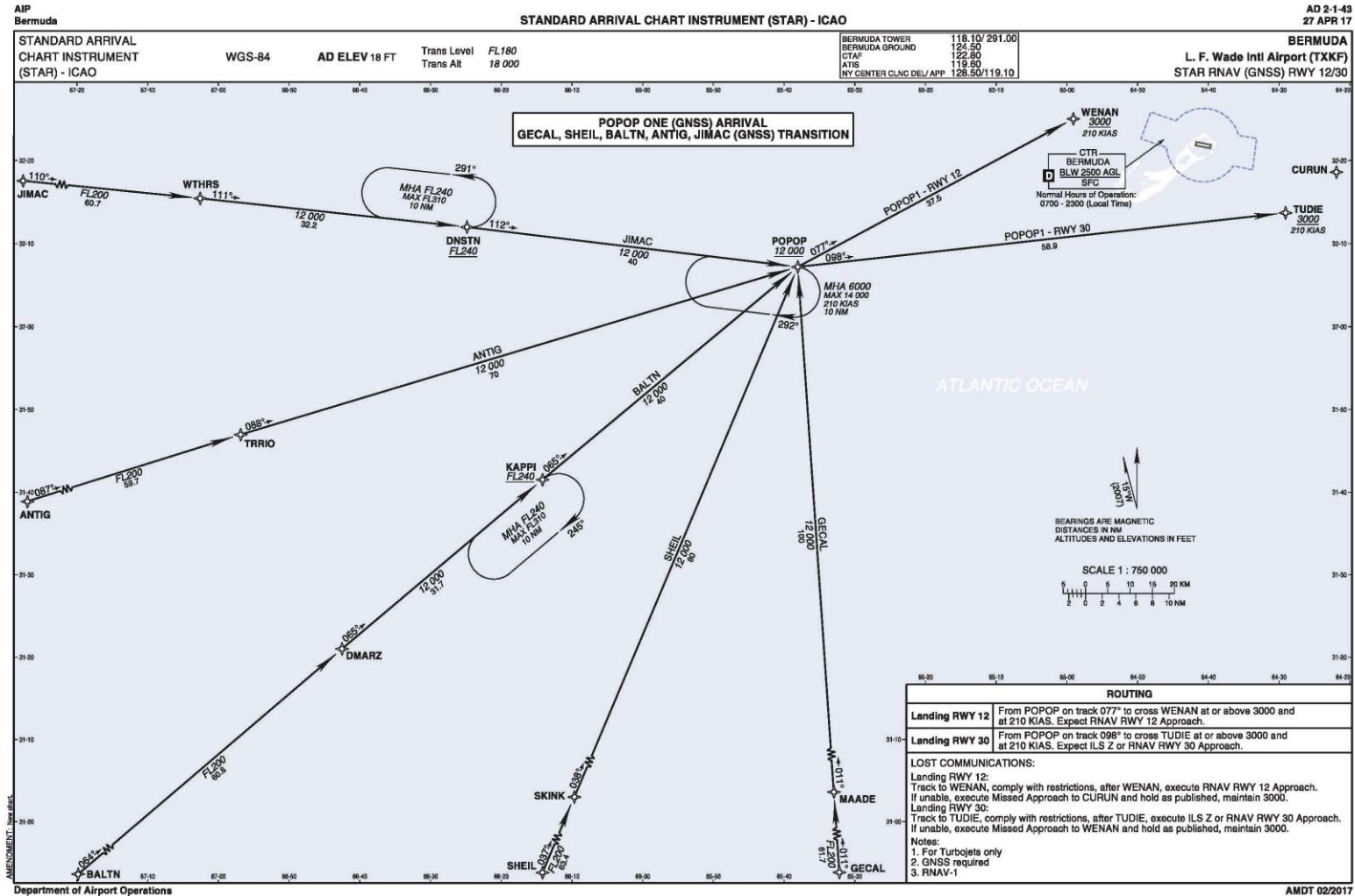
MOMOM ONE RNAV (GNSS) STAR



POPOP ONE RNAV (GNSS) STAR

- **EN ROUTE TRANSITIONS:**
 - JIMAC
 - ANTIG
 - BALTN
 - SHEIL
 - GECAL
- **VERTICAL NAVIGATION**
- **RWY 12 TRANSITION**
- **RWY 30 TRANSITION**

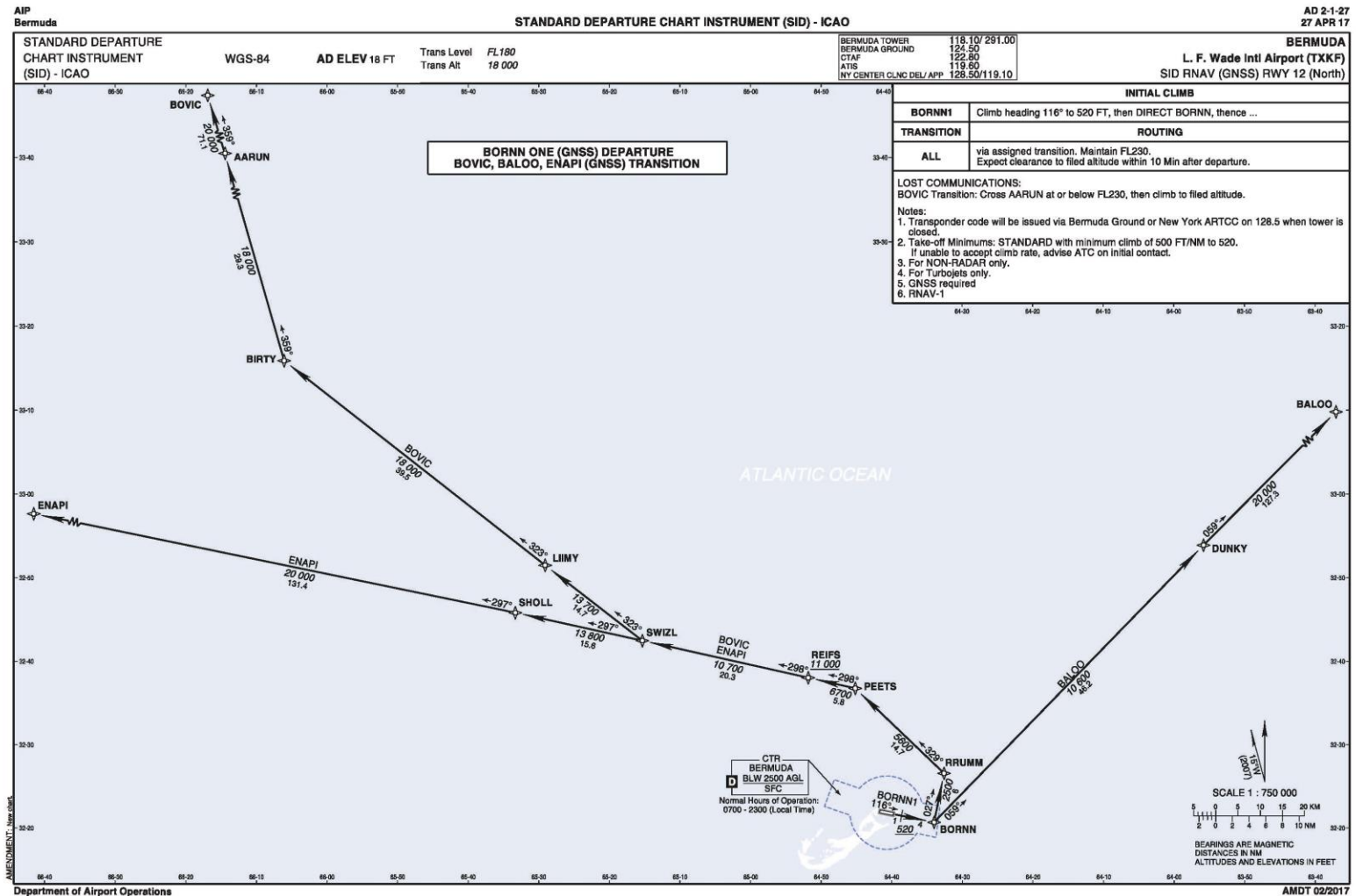
POPOP ONE RNAV (GNSS) STAR



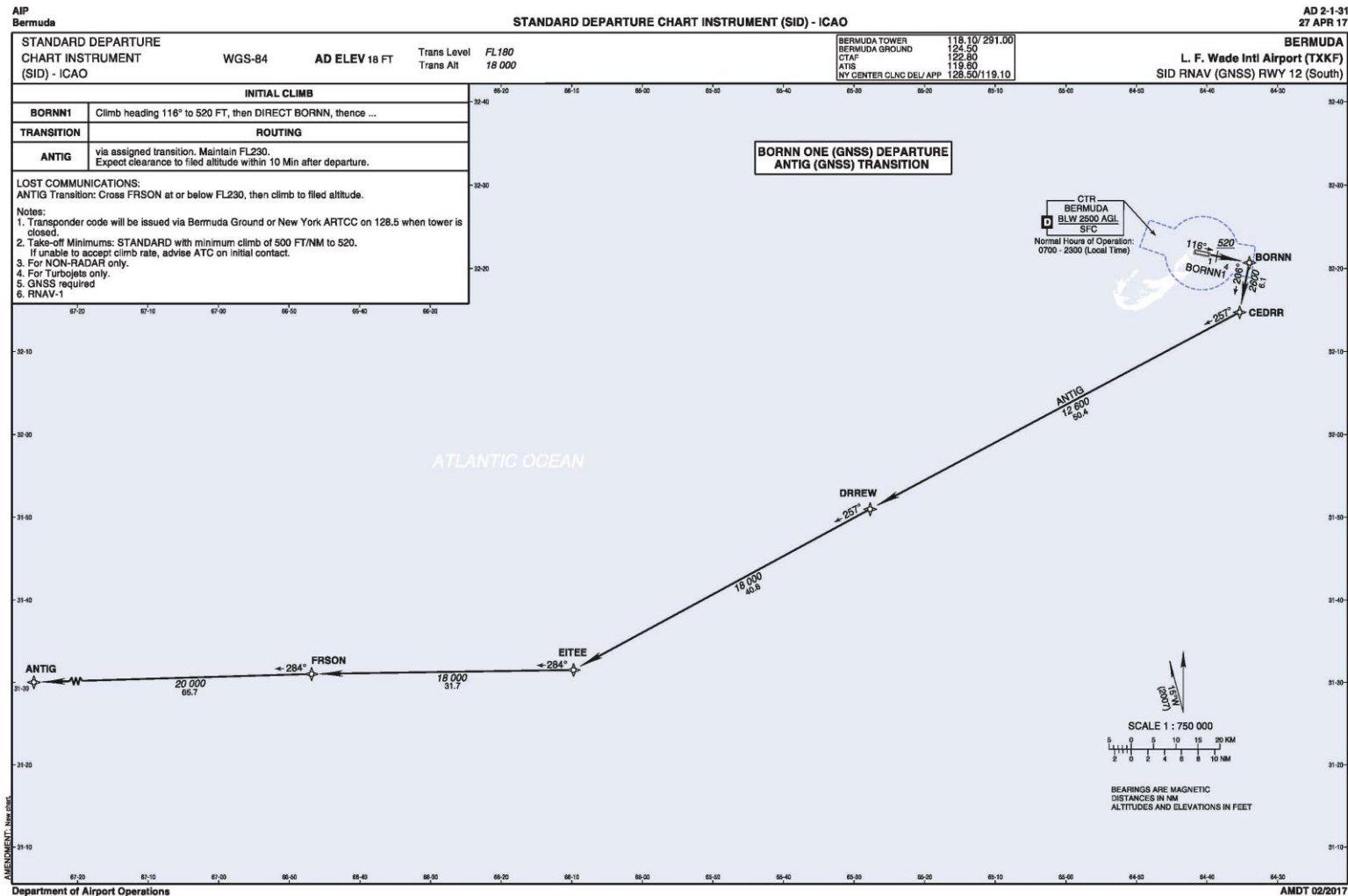
BORNN ONE (GNSS) DP RWY-12

- **EN ROUTE TRANSITIONS:**
 - BALOO
 - BOVIC
 - ENAPI
 - ANTIG
- **RUNWAY 12 DEPARTURES**
- **INITIAL ALTITUDE FL230**
- ***FOR NON-RADAR USE ONLY***

BORNN ONE (GNSS) DP RWY-12



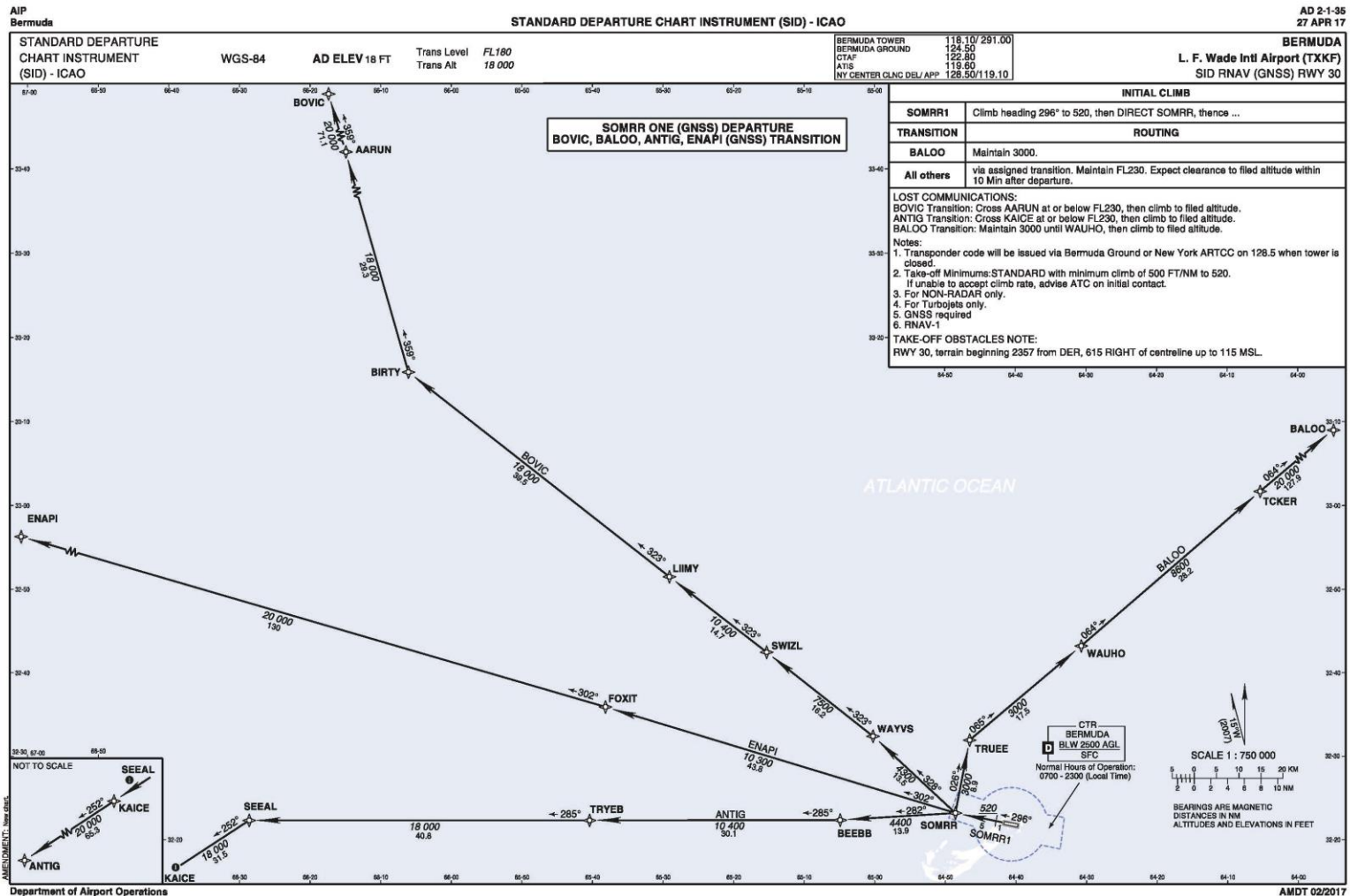
BORNN ONE (GNSS) DP RWY-12



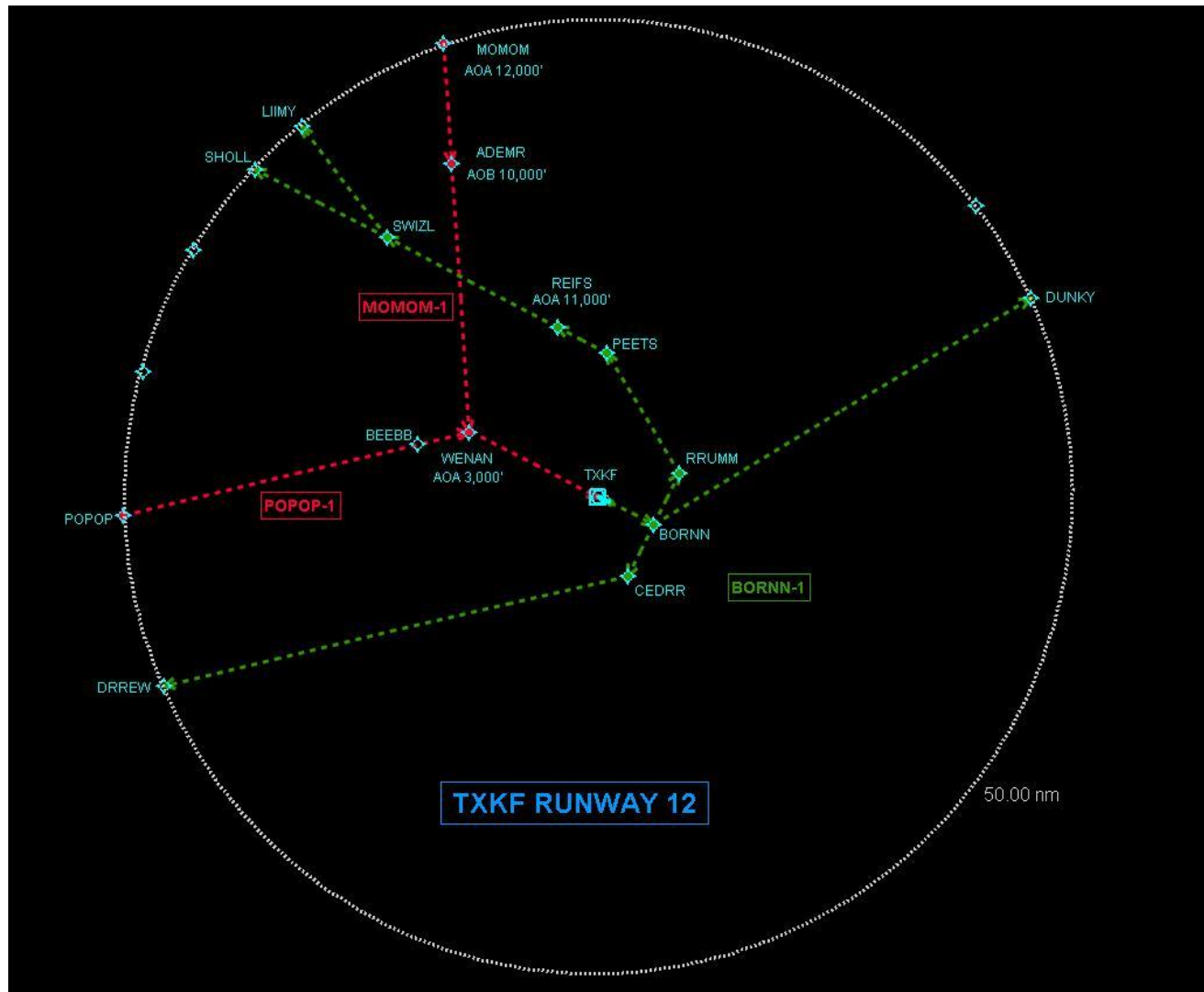
SOMRR (GNSS) DP RWY-30

- **EN ROUTE TRANSITIONS:**
 - BALOO
 - BOVIC
 - ENAPI
 - ANTIG
- **RUNWAY 30 DEPARTURES**
- **INITIAL ALTITUDE FL230 (EXCEPT BALOO TRANS.)**
- **INITIAL ALTITUDE, BALOO TRANSITION: 3,000'**
- ***FOR NON-RADAR USE ONLY***

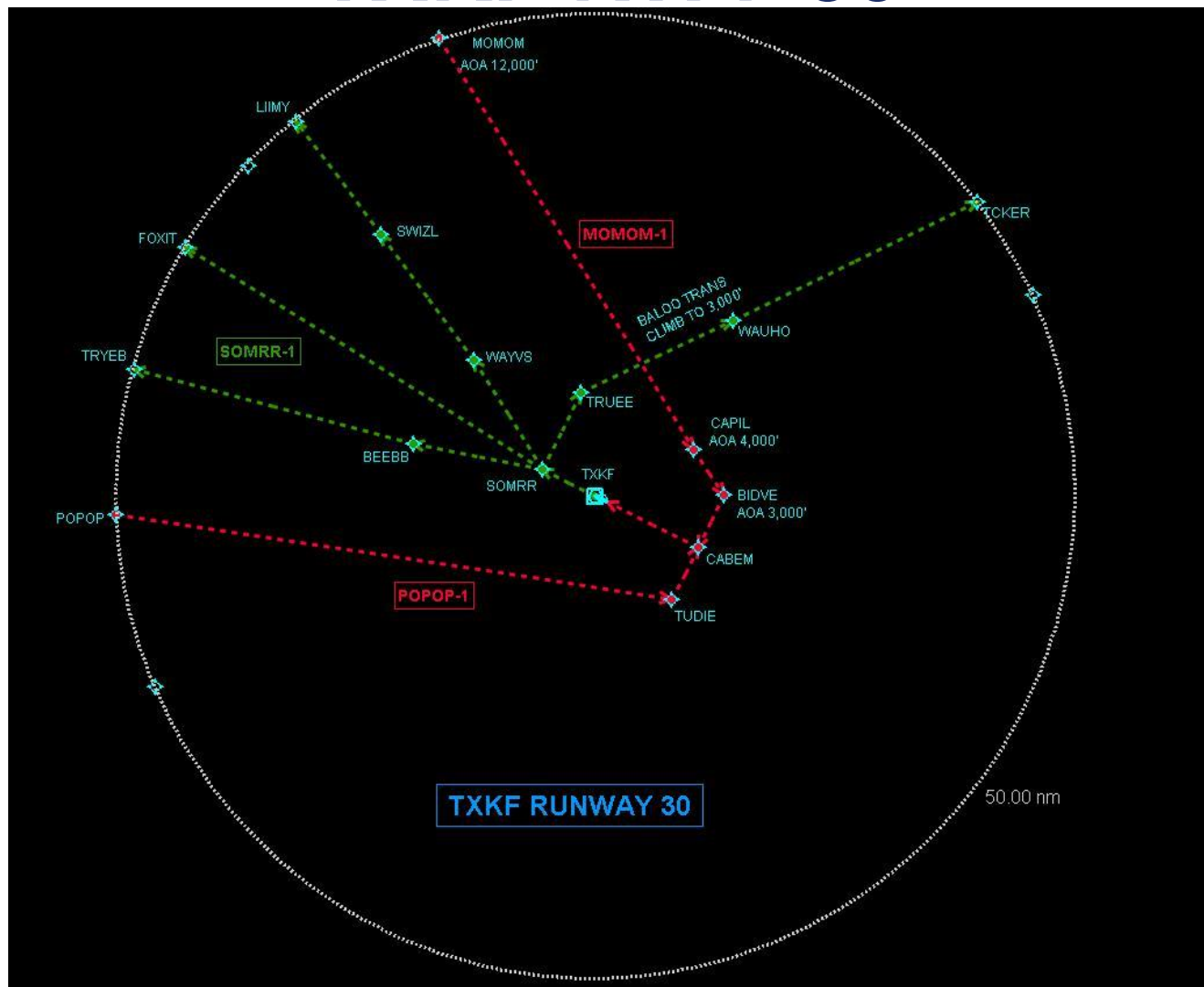
SOMRR (GNSS) DP RWY-30



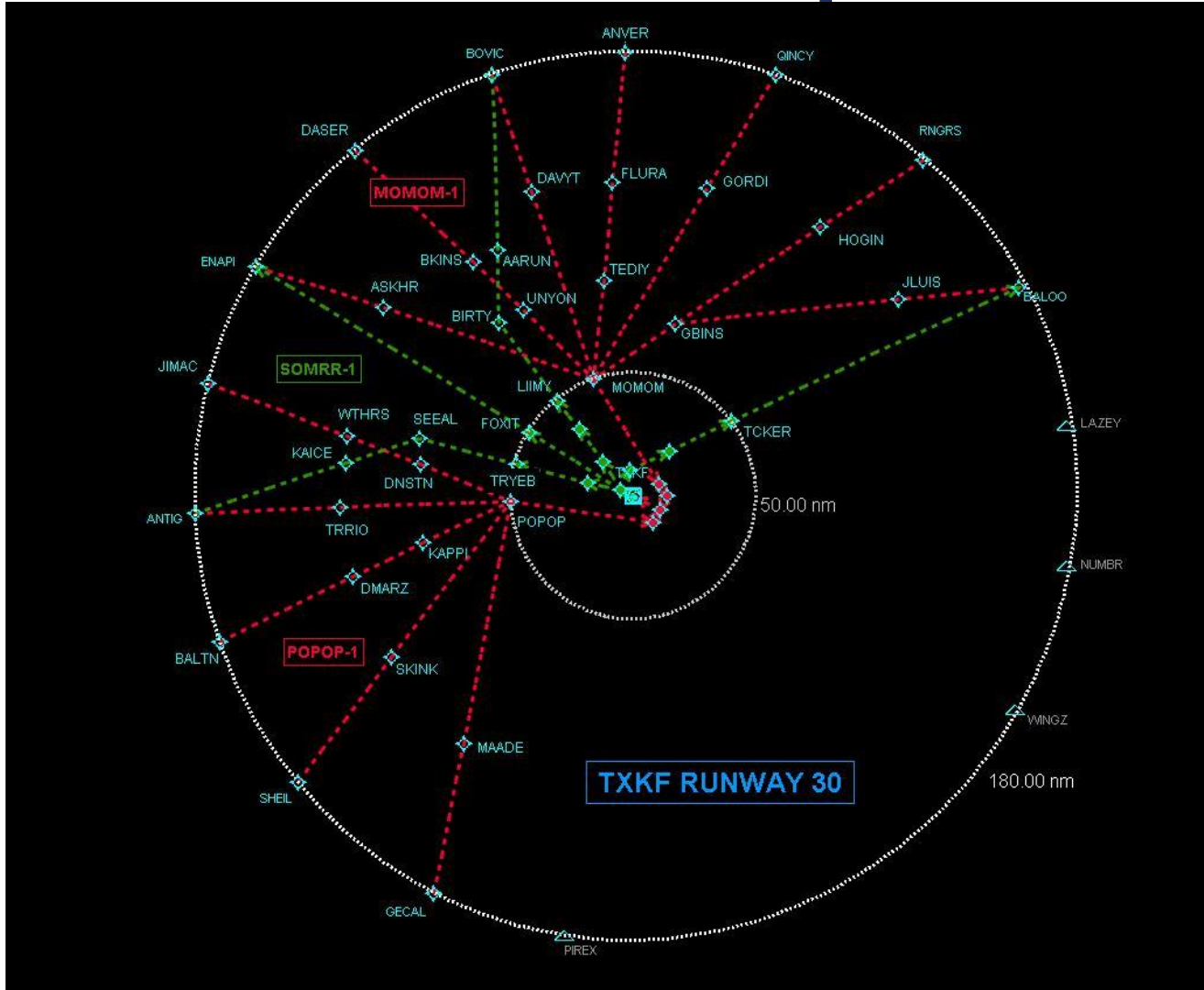
TXKF RWY-12



TXKF RWY-30



TXKF RWY-30 Expanded



Questions?

